

100
YEAR
ANNIVERSARY
1920 - 2020

BALMORAL CONTRACTS

Contract Bedding
2021



John Moffett with his son Bernie



Our story

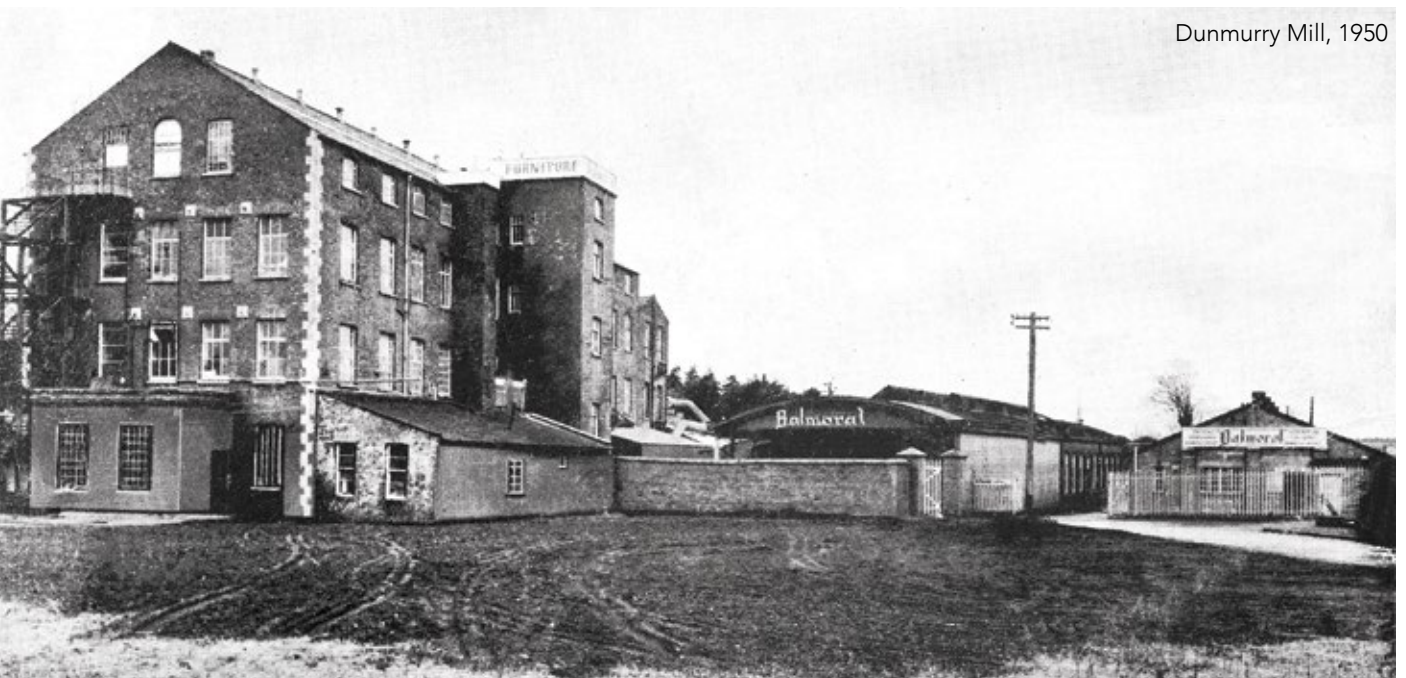
In 1920, John Moffett ventured out and started up his own small upholstery business in Linenhall Street, Belfast.

After finding initial success, the Company started manufacturing chairs and handmade mattresses in the late 1930's. Soon after, with the outbreak of

World War 2, the Company shifted its perspective towards manufacturing furniture for the Home Office as part of the War effort.

Post-World War 2, Balmoral took delivery of its first automated mattress making machines including tape edge sewing and tufting machines. This greatly improved productivity, allowing the business to grow and expand once again into new markets.

Great Northern Street was the initial home of the upholstery and bedding manufacturing business but with ever increasing sales and production capacity constraints, the Company took the ambitious decision to move across Belfast to Locksley Drive and Station View.



100 YEAR ANNIVERSARY 1920 - 2020

With the main production facility at Station View in Dunmurry, the Moffett family set-up Balmoral Textiles to cater for the growing demand in upholstery supplies and foam conversion. Balmoral Textiles continues to thrive to this day and still trades from Station View; recently celebrating its 50th anniversary.

Balmoral continued to grow from strength to strength, despite the ongoing political situation, by opening unique trade showrooms that offered retailers an extensive showroom facility for their customers to view the latest product designs and finishes.

In 1981, the Company sought to purchase land at Seymour Hill to enable it to increase its manufacturing capacity by building a purpose-built factory. The first units occupied at Seymour Hill were home to the bedding production departments.

Additional units were added over subsequent years to house the various other Company production departments including tubular furniture, cabinet making and upholstery. This has enabled the Company to keep moving with current on trend development of its products and services.



In the mid 80's, Laurence Moffett, the Company's present Chairman, saw the potential for importing furniture from across the world to increase the Company's product offering alongside their own manufactured goods. This provided a far more diverse and competitive range of products that enabled Balmoral to build on previous success.

Now coming to the present day, the business has become one of the largest furniture companies within the Furniture Industry, trading as Moffett & Sons Ltd / Balmoral Furniture.



The current home is an impressive 300,000 sq ft site consisting of both production and storage facilities including a modern bedding factory.

Balmoral has always re-invested in the latest manufacturing processes and machines to maintain its position within the industry. Although, the greatest attribute to the Company's success, through-out the years, has been its staff; from production to clerical staff, admin and our despatch team, we trade on our quality and service.



The Company is proud to be a family owned and run business; with four members of the 4th generation of the Moffett family currently involved in the day to day running of the business. Their goal is to keep the Balmoral and Slumbernight brands at the forefront of the furniture market and to continue their success into the future.



The special 100th Anniversary Edition of our brochure would not have been possible without the continued support of you, our customer! Therefore, we take this opportunity to thank you for your support and we look forward to working with you in the future.

100
YEAR
ANNIVERSARY
1920 - 2020



Seymour Hill Industrial Estate
Dunmurry, Belfast,
N.Ireland. BT17 9PW

Tel: 028 90 301411
Email: sales@moffett.co.uk
www.balmoralcontracts.co.uk



Carlton Hotel, Edinburgh

Maldron Hotel, Pearse Street



Fitzwilliam Hotel, Belfast



Clayton Hotel, Wexford



Maldron Hotel, Cardiff



Arc Apartments, Belfast



Ralphs Guest House, Moira



Jurys Inn, Islington



Hotel Beds



Presidential

The luxurious Presidential collection delivers the ultimate experience in comfort and relaxation. Exceptional quality for the discerning guest.

- Luxurious pocket spring system for comfort and support
- Perimeter wire frames to reinforce the mattress edge
- Flex-edge border supports providing edge to edge support
- 8 layers of quality upholstery fillings including resilient polyester and foam
- Sumptuous pillow-top construction featuring super soft foam and polyester cushioning
- Attractive Source 5 Balmoral damask, produced locally in Ireland
- Padded contract quality platform top divan base with twin wheel castors, providing a firm and solid foundation for the mattress
- Divan base available in self colour Balmoral damask or micro-fibre cover
- Non-turn mattress. Rotate only.



Executive Pocket

The Executive double-sided pillow top is designed to be extremely comfortable with the option of using either side of the mattress to prolong its working life.

- Orthopaedic bonnell open coil spring system for endurance and performance
- Perimeter wire frames to reinforce the mattress edge
- Flex-edge border supports providing edge to edge support
- Attractive Source 5 Balmoral damask, produced locally in Ireland
- 8 layers of quality upholstery fillings including resilient polyester and foam cushioning
- Luxury double pillow top construction
- High-loft tack and jump quilted mattress panels
- Padded contract quality platform top base with twin wheel castors, providing a firm and solid foundation for the mattress
- Divan base available in self colour Balmoral damask or micro-fibre cover
- Double sided mattress to prolong working life. Rotate and turn.



Aria

The Aria luxurious pocket spring hotel mattress is a five star product built with durability and comfort in mind. A perfect combination for any guest.

- Luxurious 1500 count pocket spring offering superb comfort and support
- Multiple layers of quality fillings including several layers of Reflex foam
- Perimeter wire frames to reinforce the mattress edge
- Flex-edge border supports providing edge to edge support
- Micro-quilted damask panels offering a smooth and even sleep surface
- Padded contract quality platform top base with twin wheel castors, providing a firm and solid foundation for the mattress
- Divan base available in self colour Balmoral damask or micro-fibre cover
- Double sided mattress to prolong working life. Rotate and turn.
- Source 5 mattress



Excelsior Posture Comfort

The Excelsior is a luxury hand crafted cosi-flex spring mattress, with flex-edge support, delivering exceptional comfort and support for the discerning guest.

- Durable cosi-flex spring system offering excellent comfort and support
- Multiple layers of quality fillings including several layers of Reflex foam
- Perimeter wire frames to reinforce the mattress edge
- Micro-quilted damask panels offering a smooth and even sleep surface
- Padded contract quality platform top base with twin wheel castors, providing a firm and solid foundation for the mattress
- Divan base available in self colour Balmoral damask or micro-fibre cover
- Double sided mattress to prolong working life. Rotate and turn.
- Source 5 mattress





The Pocket Spring

Pocket innersprings are masters of flexibility: By placing the springs in individually separated pockets of fabric, rows of springs are produced, which are connected to each other. The springs within their pockets are able to move individually thus creating a high level of ergonomic adaptability and therefore excellent body support.



The Bonnell Spring

A spring, two knots: the Bonnell spring is really an original. Bonnell innersprings are acknowledged to be the 'classic' amongst innerspring systems – because stability and durability never go out of date. Due to their large hollow spaces, Bonnell innersprings have a particularly high air permeability. Therefore, humidity can be released to the outer air easily – providing the optimal climatic conditions within the mattress.

Regal Posture Comfort

The Regal is a luxury hand crafted cosi-flex spring mattress, with flex-edge support, delivering exceptional comfort and support for the discerning guest.

- Durable cosi-flex spring system offering excellent comfort and support
- Multiple layers of quality fillings including several layers of Reflex foam
- Perimeter wire frames to reinforce the mattress edge
- Micro-quilted damask panels offering a smooth and even sleep surface
- Padded contract quality platform top base with twin wheel castors, providing a firm and solid foundation for the mattress
- Divan base available in self colour Balmoral damask or micro-fibre cover
- Double sided mattress to prolong working life. Rotate and turn.
- Source 5 mattress



Deluxe 5 Pocket

The Deluxe 5 collection, the popular choice for hoteliers throughout the country, is renowned for providing exceptional comfort and support.

- Luxurious pocket spring system for comfort and support
- Perimeter wire frames to reinforce the mattress edge
- Flex-edge border supports providing edge to edge support
- 10 layers of quality upholstery fillings including resilient polyester and foam cushioning
- Attractive Source 5 Balmoral damask, produced locally in Ireland
- Micro-quilted mattress panels for a smooth and even sleep surface
- Padded contract quality platform top divan base with twin wheel castors, providing a firm and solid foundation for the mattress
- Divan base available in self colour Balmoral damask or micro-fibre cover
- Double sided mattress to prolong working life. Rotate and turn.



Deluxe 5 Bonnell

The Deluxe 5 collection, the popular choice for hoteliers throughout the country, is renowned for providing exceptional comfort and support. .

- Orthopaedic bonnell open coil spring system for endurance and performance
- Perimeter wire frames to reinforce the mattress edge
- Flex-edge border supports providing edge to edge support
- 10 layers of quality upholstery fillings including resilient polyester and foam cushioning
- Attractive Source 5 Balmoral damask, produced locally in Ireland
- Micro-quilted mattress panels for a smooth and even sleep surface
- Padded contract quality platform top divan base with twin wheel castors, providing a firm and solid foundation for the mattress
- Divan base available in self colour Balmoral damask or micro-fibre cover
- Double sided mattress to prolong working life. Rotate and turn.



Viscount

Featuring an LFK continuous coil spring unit with reinforced sides, providing independent non-roll support and profile foam which helps air flow for a comfortable nights sleep.

- Durable cosi-flex spring system offering excellent comfort and support
- Multiple layers of luxurious fillings including profile foam
- Perimeter wire frames to reinforce the mattress edge
- Micro-quilted damask panels offering a smooth and even sleep surface
- Padded contract quality platform top divan base with twin wheel castors, providing a firm and solid foundation for the mattress
- Divan base available in self colour Balmoral damask or micro-fibre cover
- Double sided mattress to prolong working life. Rotate and turn
- Source 5 mattress





The LFK Spring

The elliptically shaped end pieces of the spring form a dense surface, which provides the optimal basis for further upholstery. And because they are non knotted, these end pieces create maximum flexibility.



Comfort

The Comfort collection is designed for comfort, support and durability. Providing discerning customers with maximum return from purchasing budgets.

- Orthopaedic bonnell open coil spring system for endurance and performance
- Perimeter wire frames to reinforce the mattress edge
- Shown in locally produced Source 5 Balmoral damask (also available in 100% cotton stripe ticking with Ultra-fresh Antimicrobial protection)
- 6 layers of quality upholstery fillings including resilient polyester and blended felt pads
- Padded contract quality platform base with twin wheel castors, providing a firm and solid foundation for the mattress
- Divan base shown in micro-fibre fabric (also available in Source 5 Balmoral damask or 100% cotton stripe ticking)
- Micro-quilted mattress panels for a smooth and even sleep surface
- Double sided mattress to prolong working life. Rotate and turn.



Marquess

The Marquess incorporates a 1000 count pocket spring unit with reinforced sides, providing independent non-roll support and profile foam which helps aid air flow for a comfortable nights sleep.

- Luxurious pocket spring system providing comfort and support
- Perimeter wire frames to reinforce the mattress edge
- Multiple layers including profile foam to enhance airflow and comfort
- Padded contract quality platform base with twin wheel castors, providing a firm and solid foundation for the mattress
- Divan base shown in micro-fibre fabric (also available in Source 5 Balmoral damask or 100% cotton stripe ticking)
- Micro-quilted mattress panels for a smooth and even sleep surface
- Double sided mattress to prolong working life. Rotate and turn.



Residential Beds



Elms

- Orthopaedic heavy gauge 12.5G bonnell spring system with perimeter wire frames to reinforce the mattress edge
- Specialised Aquatex breathable Source 5 waterproof ticking, featuring:
 - Antimicrobial
 - Hypo-allergenic
 - Breathable
 - Colour fastness
 - Abrasion resistant
 - Washable
- Quality upholstery fillings including:
 - Heat treated insulator pads
 - Wool blended padding
 - Polyester
- Micro quilted tops to give enhanced comfort
- Double sided mattress to prolong working life. Rotate and turn.



Pearl

- Pearl 13.5G bonnell open coil spring system with perimeter wire frames to reinforce the mattress edge
- Hard wearing stitchbond Source 5 ticking
- Quality upholstery fillings including resilient polyester and blended felt pads
- Durable platform base to support mattress
- Double sided mattress to prolong working life. Rotate and turn.



Coral

- Coral 13.5G open coil bonnell spring system
- PVC coated waterproof stitchbond Source 5 ticking
- Quality upholstery fillings including resilient polyester and blended felt pads
- Durable platform base to support mattress
- Double sided mattress to prolong working life. Rotate and turn.



Aquatex

- Orthopaedic bonnell open coil spring system
- Perimeter wire frames to reinforce the mattress edge
- Quality upholstery fillings including blended and heat treated felt pads
- Specialised Aquatex breathable Source 5 waterproof ticking, featuring:
 - Antimicrobial
 - Hypo-allergenic
 - Breathable
 - Colour fastness
 - Abrasion resistant
 - Washable
- Double sided mattress to prolong working life. Rotate and turn.



Source 7

- Orthopaedic bonnell open coil spring system
- Perimeter wire frame to support mattress edge
- Quality upholstery fittings including compressed polyester and heavyweight contract white cotton felt
- Durable herringbone ticking with Source 5 interliner
- Tufted
- Double sided mattress to prolong working life. Rotate and turn.



Hotel Base Options

Divan bases are available with the following options

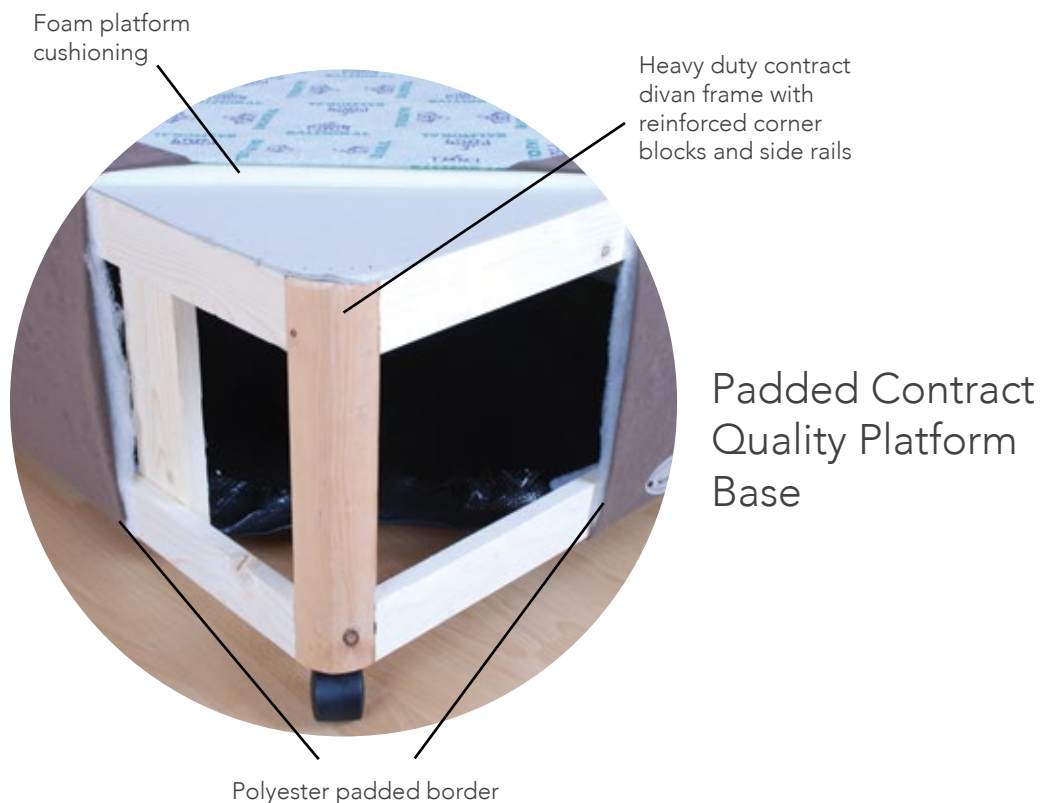


Blue Microfibre Base



Brown Microfibre Base

Other microfibre fabrics are available on request



Residential Base Options



Residential
Home Divan

Cut out base for hoist access

Bases are available with the following leg and castor options



Built in leg on castor



Metal Skid
Base & MFC
Headboard



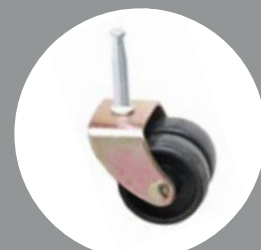
Wooden legs



Metal Skid
Base with MFC
Surround &
Headboard

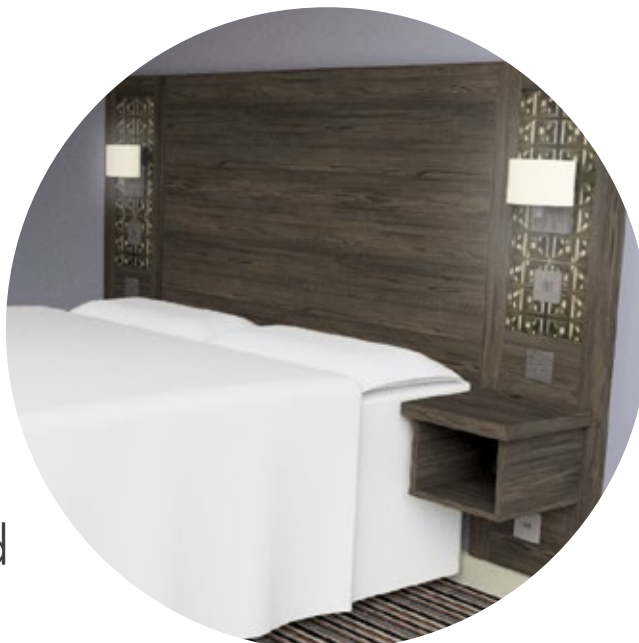


Chrome glides



Twin wheel castors

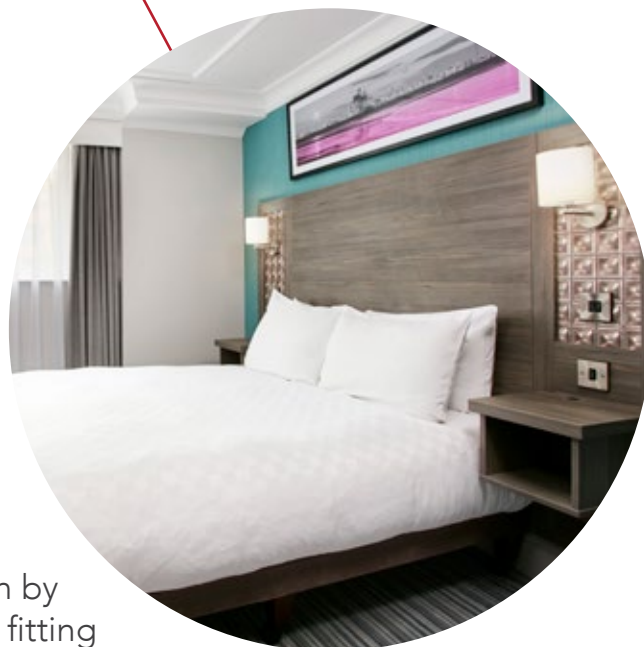
Hotel
casegoods and
freestanding
furniture
designed to meet
your individual
requirements



Bespoke CAD design
to meet customer
expectations



Casegoods and free
standing furniture
manufactured within
Balmoral's state of
the art factory



Installation by
experienced fitting
teams



Moffett & Sons Limited

Seymour Hill Industrial Estate
Dunmurry Belfast
BT17 9PW
Northern Ireland

Tel: 028 90 301411
Fax: 028 90 610785
Contracts Fax: 028 90 604140

Email: enquiries@moffett.co.uk
www.balmoralcontracts.co.uk

We reserve the right to change bed specifications and tickings without notice