

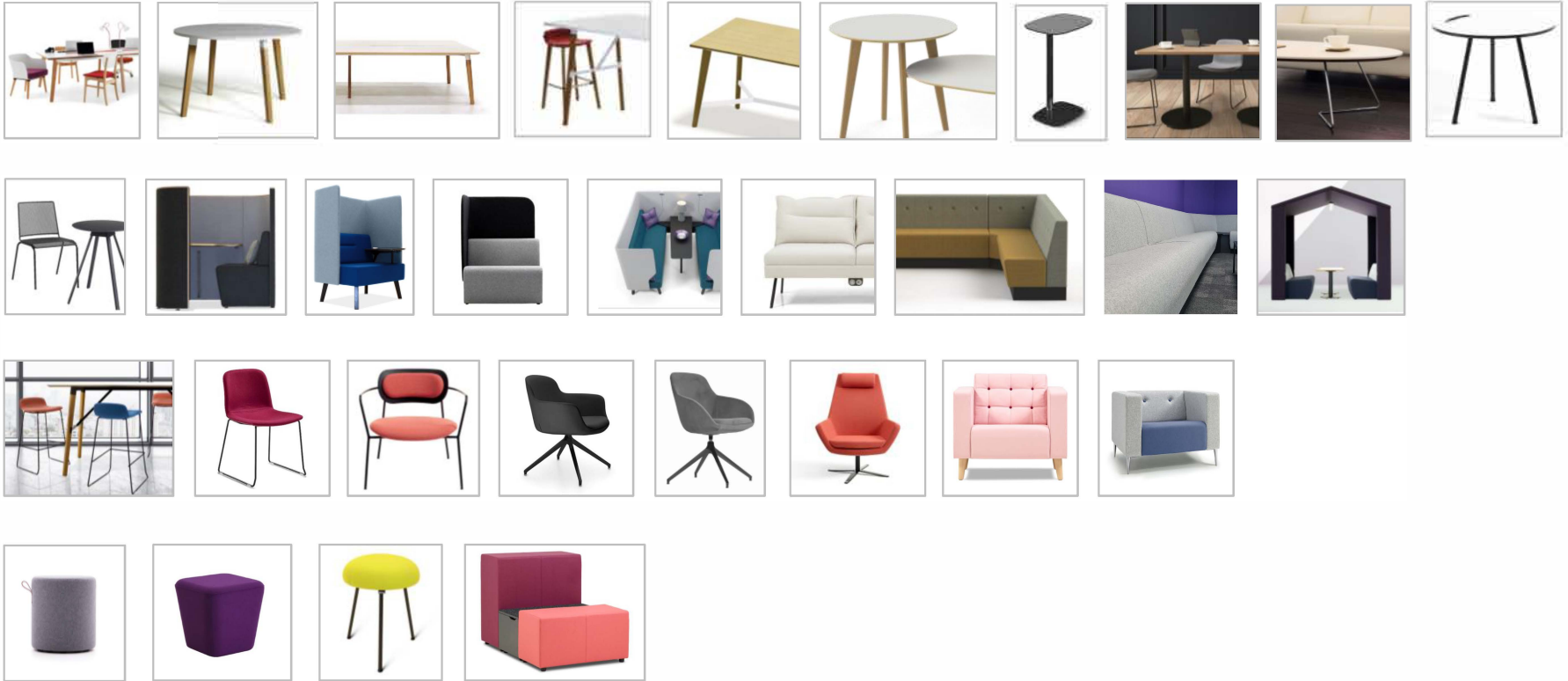


 **BALMORAL**  
CONTRACTS

Collection

August 2022

# Contents:



- |                                |                            |                          |                                 |
|--------------------------------|----------------------------|--------------------------|---------------------------------|
| 1. Martin Collaborative Tables | 11. Tapas                  | 20. Bethan High Stools   | 28. Box-it - upholstered stools |
| 2. Jack Circular tables        | 12. Bee Solo Booths        | 21. Bethan Seating       | 29. See - upholstered stools    |
| 3. Jack Team Tables            | 13. Brix Solo Work Booths  | 22. Klara Lounge Seating | 30. SW19 - upholstered stools   |
| 4. Jack High Tables            | 14. Plaza Solo Booths      | 23. Danny tub chairs     | 31. Stage Tiered Seating        |
| 5. Martin High Tables          | 15. Brix Booths            | 24. Snug lounge seating  |                                 |
| 6. Partner Tables              | 16. Anna                   | 25. Bjorn and Benny      |                                 |
| 7. Dice Laptop Table           | 17. Evette Low Back Booths | 26. Abby                 |                                 |
| 8. Farrington Tables           | 18. Plaza Banquette        | 27. Jensen               |                                 |
| 9. Plus Coffee Tables          | 19. Carriage               |                          |                                 |
| 10. Klara Coffee Tables        |                            |                          |                                 |



Martin  
Tables\_



# Martin Collaborative Tables

**PRODUCT CODE:**  
**MHT 2412 R**

**NAME OF PRODUCT:**  
Martin Rectangular Collaborative Tables

---

**Dimensions:**

**MMT 4414 R** - 4400 W x 1400 D x 740 H

**MMT 3614 R** - 3600 W x 1400 D x 740 H

**MMT 2412 R** - 2400 W x 1200 D x 740H

**MMT 2010 R** - 2000 W x 1000 D x 740 H

**MMT 1808 R** - 1800 W x 800 D x 740 H

**MMT 1608 R** - 1600 W x 800 D x 740 H

---

**Standard product information:**

**Frame:** Rectangular steel tube, epoxy painted black or white

**Legs:** Solid Oak

**Top finish:** Standard 4 x Laminate finishes

Standard 5 x veneer finishes

Special Laminate finishes

---

**Specification:**

Rectangular wood framed table with a laminate or veneer top finish and a solid wood lipped square edge detail, with a 'camber' chamfer along the long edges gloss white or black frame finish.

Options for full cable management and desktop electrics

---

**Options:**

Top finish – veneer (V), laminate (L)

Leg frames - solid oak, or Natural Walnut leg or stained black

Frame colour - white or black

Horizontal cable management

Vertical leg wire management

---



Images

CAD



# Martin Collaborative Tables

**PRODUCT CODE:**  
MHT 2412 R

**NAME OF PRODUCT:**  
Martin Barrel Shaped Collaborative Table

---

**Dimensions:**

**MMT 4414 B** - 4400 W x 1400/1200 D x 740 H

**MMT 3614 B** - 3600 W x 1400/1200 D x 740 H

**MMT 2412 B** - 2400 W x 1200/1000 D x 740H

---

**Standard product information:**

**Frame:** Rectangular steel tube, epoxy painted black or white

**Legs:** Solid Oak

**Top finish:** Standard 4 x Laminate finishes  
Standard 5 x veneer finishes  
Special Laminate finishes



Images

CAD



Jack\_



## NAME OF PRODUCT:

Jack Circular Tables

---

### Product Codes & Dimensions:

**JMT 18 C** - Overall – 1800mm Dia x 740 H

**JMT 16 C** - Overall – 1600mm Dia x 740 H

**JMT 15 C** - Overall – 1500mm Dia x 740 H

**JMT 14 C** - Overall – 1400mm Dia x 740 H

**JMT 12 C** - Overall – 1200mm Dia x 740 H

**JMT 10 C** - Overall – 1000mm Dia x 740 H

---

### Range description:

Jack circular meeting tables are another development from our large portfolio of meeting and conference tables. Available at a height of 740mm with top finishes in MFC or in wood veneer with a square edge profile, or in laminate with a chamfered edge profile.

### Specification:

Circular wood framed table with an MFC, laminate or veneer top finish and square edge detail, with a gloss white or black frame finish.

Options for full cable management and desktop electrics.

---

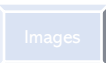
### Options:

Top finish – veneer (V), laminate (L), MFC (M) followed by finish.

Leg frames - solid oak leg or stained black

Frame colour - white or black

---





# Jack Rectangular Team Tables

## NAME OF PRODUCT:

Jack Rectangular Team tables

---

### Product Codes & Dimensions:

**JMT 5615 R** – Overall - 5600 W x 1500 D x 740 H  
**JMT 5215 R** – Overall - 5200 W x 1500 D x 740 H  
**JMT 4815 R** – Overall - 4800 W x 1500 D x 740 H  
**JMT 4415 R** – Overall - 4400 W x 1500 D x 740 H  
**JMT 3615 R** – Overall - 3600 W x 1500 D x 740 H  
**JMT 3215 R** – Overall - 3200 W x 1500 D x 740 H  
**JMT 2815 R** – Overall - 2800 W x 1500 D x 740 H  
**JMT 2412 R** – Overall - 2400 W x 1200 D x 740 H  
**JMT 2010 R** – Overall - 2000 W x 1000 D x 740 H  
**JMT 2008 R** – Overall - 2000 W x 800 D x 740 H  
**JMT 1808 R** – Overall - 1800 W x 800 D x 740 H  
**JMT 1608 R** – Overall - 1600 W x 800 D x 740 H

---

### Range description:

Jack rectangular meeting tables, available at a height of 740mm with top finishes in MFC or in wood veneer, with a square edge profile, or in laminate with a chamfered edge profile.

### Specification:

Rectangular wood framed table with an MFC, laminate or veneer top finish and square edge detail, with a gloss white or black frame finish. A contrast finish edge detail offers the opportunity to suite this versatile table collection to your chosen design style

Options for full cable management and desktop electrics

---

### Options:

Top finish – veneer (V), laminate (L), MFC (M), followed by finish.

Leg frames - solid oak leg or stained black

Frame colour - white or black

---







# Jack 'D' Ended Team Tables

## NAME OF PRODUCT:

Jack D ended Team Tables

---

## Product Code & Dimensions:

**JMT 7015 D** - Overall – 7000 W x 1500 D x 740 H  
**JMT 5815 D** - Overall – 5800 W x 1500 D x 740 H  
**JMT 5615 D** - Overall – 5600 W x 1500 D x 740 H  
**JMT 5015 D** - Overall – 5000 W x 1200 D x 740 H  
**JMT 4815 D** - Overall – 4800 W x 1500 D x 740 H  
**JMT 4415 D** - Overall – 4400 W x 1500 D x 740 H  
**JMT 3615 D** - Overall – 3600 W x 1500 D x 740 H  
**JMT 3612 D** - Overall – 3600 W x 1200 D x 740 H  
**JMT 3015 D** - Overall – 3000 W x 1500 D x 740 H  
**JMT 3012 D** - Overall – 3000 W x 1200 D x 740 H  
**JMT 2815 D** - Overall – 2800 W x 1500 D x 740 H  
**JMT 2412 D** - Overall – 2400 W x 1200 D x 740 H  
**JMT 2012 D** - Overall – 2000 W x 1200 D x 740 H

---

## Range description:

Jack meeting tables are another development from our large portfolio of meeting and conference tables.. Available at a height of 740mm with top finishes in MFC or in wood veneer, with a square edge profile, or in laminate with a chamfered edge profile.

## Specification:

Rectangular wood framed table with an MFC, laminate or veneer top finish and square edge detail, with a gloss white or black frame finish. A contrast finish edge detail offers the opportunity to suite this versatile table collection to your chosen design style

Options for full cable management and desktop electrics

---

## Options:

Top finish – veneer (V), laminate (L), MFC (M), followed by finish.

Leg frames - solid oak leg or stained black

Frame colour - white or black

---



Images

CAD



Martin High  
Tables\_



# Martin High Tables

**PRODUCT CODE:**

MHT 2410 R

**NAME OF PRODUCT:**

Martin High Table

**Dimensions:**

MHT 4414 R - 4400 W x 1400 D x 1050 H

MHT 3614 R - 3600 W x 1400 D x 1050 H

MHT 3212 R - 3200 W x 1200 D x 1050 H

MHT 2412 R - 2400 W x 1200 D x 1050 H

MHT 3210 R - 3200 W x 1000 D x 1050 H

MHT 2410 R - 2400 W x 1000 D x 1050 H

MHT 2010 R - 2000 W x 1000 D x 1050 H

MHT 2008 R - 2000 W x 800 D x 1050 H

MHT 1808 R - 1800 W x 800 D x 1050 H

MHT 1608 R - 1600 W x 800 D x 1050 H

**Standard product information:**

**Frame:** Rectangular steel tube, epoxy painted black or white

**Legs:** Solid Oak

**Top finish:** Standard 4 x Laminate finishes

Standard 5 x veneer finishes

Special Laminate finishes



Images

CAD





Jack High  
Tables\_



# Jack High Tables

**PRODUCT CODE:**  
JHMT 2410 R

**NAME OF PRODUCT:**  
Jack High Table

---

**Dimensions:**

**JMHT 2410 R** - 2400 W x 1000 D x 1050 H

**JMHT 2010 R** - 2000 W x 1000 D x 1050 H

**JMHT 2008 R** - 2000 W x 800 D x 1050 H

**JMHT 1808 R** - 1800 W x 800 D x 1050 H

**JMHT 1608 R** - 1600 W x 800 D x 1050 H

---

**Specification:**

Rectangular four-legged wood framed high table with an MFC, laminate or veneered top finish and square edge profile on the MFC and veneer tops while the laminate features a chamfered edge profile

Wire management and power modules can be fitted easily to these tables to provide the ultimate agile workstation

---

**Standard product information:**

Frame: Rectangular steel tube, epoxy painted black or white

Legs: Solid Oak

Top finish: Standard 10 x MFC finishes:

Standard 4 x Laminate finishes

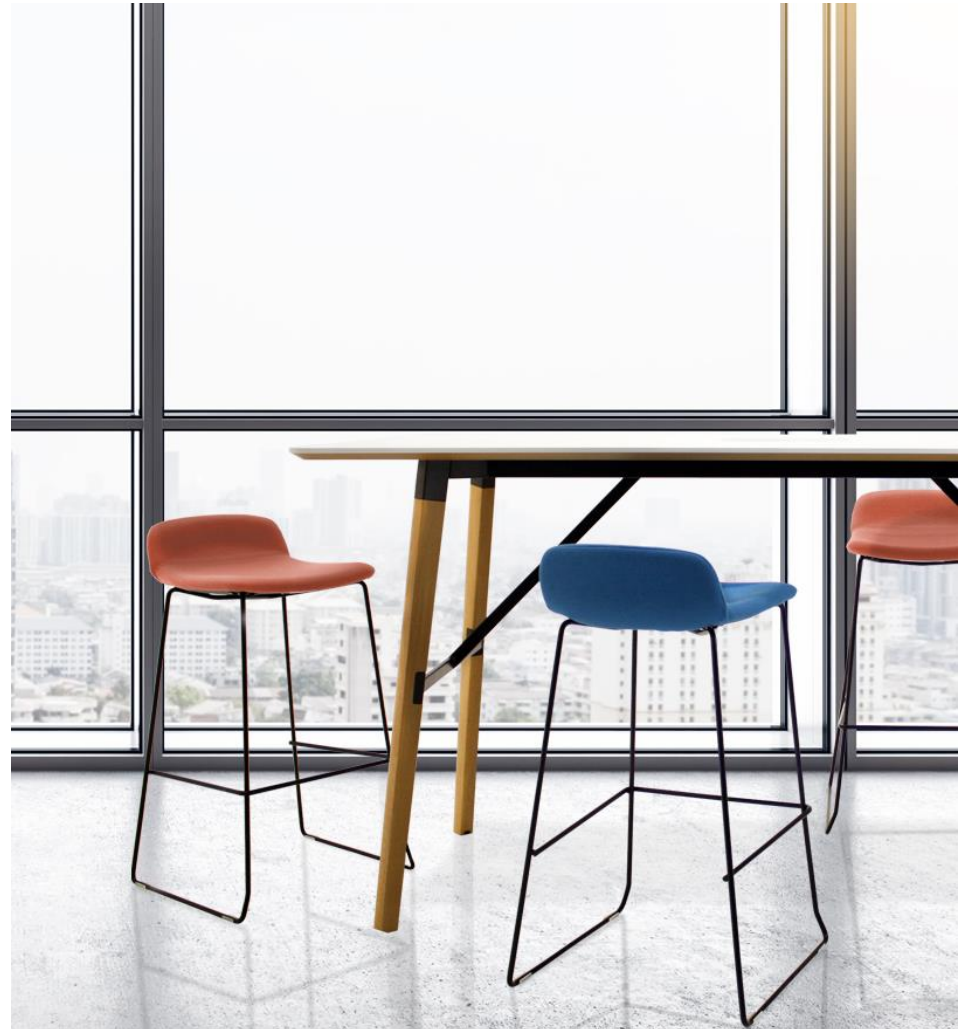
Standard 5 x veneer finishes

Special Laminate finishes



Images

CAD





Partner  
Tables\_



# Partner Tables

## NAME OF PRODUCT:

Martin Partner Tables

### Product Code & Dimensions:

**MPT 4212** - Overall – **4200w x 1200d** x 1150/740h  
High table – 1200diam x 1050    Oval table – 3400 x 1200 x 740

**MPT 3515** - Overall – **3500w x 1500d** x 1150/740h  
High table – 1500diam x 1050    Oval table – 2400 x 1200 x 740

**MPT 3212** - Overall – **3200w x 1200d** x 1150/740h  
High table – 1200diam x 1050    Oval table – 2400 x 1200 x 740

**MPT 3015** - Overall – **3000w x 1500d** x 1150/740h  
High table – 1500diam x 1050    Oval table – 1900 x 1200 x 740

**MPT 2812** - Overall – **2800w x 1200d** x 1150/740h  
High table – 1200diam x 1050    Oval table – 2000 x 1200 x 740

**MPT 2412** - Overall – **2400w x 1200d** x 1150/740h  
High table – 1200diam x 1050    Oval table – 1600 x 1200 x 740

### Range description:

Martin twin height Partner table with a high circular table 1050mm height joined with a 740mm height oval table, with Ice white laminate top finish, with Oak ABS cut back edge detail and with solid Oak leg frames

### Specification:

Twin Height wood framed table with a laminate or veneer top finish and square edge detail, with a gloss white or black frame finish. A contrast finish edge detail offers the opportunity to suite this versatile table collection to your chosen design style

Options for full cable management and desktop electrics

### Options:

Top finish – veneer (V), laminate (L), followed by finish.  
Leg frames - solid oak leg or stained black  
Frame colour - white or black





Dice\_



**PRODUCT CODE:**

DCE 35

**NAME OF PRODUCT:**

Dice

**Dimensions:**

DCE 35 - Overall - : 350 W x 350 D x 600 H

**Specification:**

Table: black laminate finish on a CDF CDF with a black steel frame

**Range description:**

Dice tables offer a versatile, robust and flexible work surface for use with soft seating units, settees and sofas. The frame in either white or black satin finish, supports a slim profile trapezoidal work-surface featuring a useful handle to assist positioning of the table while in a sitting position. The Dice-Up table offers even greater versatility and flexibility, being height adjustable, allowing the table to be used in many different situations and is available in Gloss white, black or silver finish.

**Standard product information:**

standard top, tubular steel frame, black or white finish,

[Images](#)[CAD](#)



Farringdon\_



# Farringdon Coffee Tables

## NAME OF PRODUCT

Farringdon Coffee Tables

### Dimensions:

<b>FCT 06 S</b> -	Square -	Overall: 600 W x 600 D x 455 H
<b>FCT 08 C</b> -	Circular -	Overall: 800 diam x 455 H
<b>FCT 06 DB</b> -	Soft Square -	Overall: 640 W x 640 D x 455 H
<b>FCT 1206 R</b> -	Rectangular -	Overall: 1200 W x 600 D x 455 H
<b>FCT 1607 E</b> -	Elliptical -	Overall: 1600 W x 700 D x 455 H

### Specification:

**Table:** MFC, Laminate or veneered tops

**Frame:** Stainless Steel, or Black painted

### Range description:

Farringdon tables are available with an MFC, laminate, or veneer tabletops and with a variety of popular top shapes. Featuring a robust, flat, stainless steel, or Black painted circular disc base these tables make ideal companions to our leisure, soft seating and break-out seating collections

### Standard product information:

standard top, tubular steel frame, Stainless-steel or Black finish



Images

CAD



# Farringdon Lounge Tables

## NAME OF PRODUCT

Farringdon Lounge Tables

### Dimensions:

<b>FLT 06 S</b> -	Square -	Overall: 600 W x 600 D x 575 H
<b>FLT 08 C</b> -	Circular -	Overall: 800 diam x 575 H
<b>FLT 06 DB</b> -	Soft Square -	Overall: 640 W x 640 D x 575 H
<b>FLT 1206 R</b> -	Rectangular -	Overall: 1200 W x 600 D x 575 H
<b>FLT 1607 E</b> -	Elliptical -	Overall: 1600 W x 700 D x 575 H

### Specification:

**Table:** MFC, Laminate or veneered tops

**Frame:** Stainless Steel, or Black painted

### Range description:

Farringdon tables are available with an MFC, laminate, or veneer tabletops and with a variety of popular top shapes. Featuring a robust, flat, stainless steel, or Black painted circular disc base these tables make ideal companions to our leisure, soft seating and break-out seating collections

### Standard product information:

standard top, tubular steel frame, Stainless-steel or Black finish





# Farringdon Meeting/Dining Tables

## NAME OF PRODUCT

Farringdon Meeting/Dining Tables

### Dimensions:

<b>FDT 06 S</b> -	Square -	Overall: 600 W x 600 D x 745 H
<b>FDT 08 S</b> -	Square -	Overall: 800 W x 800 D x 745 H
<b>FDT 08 C</b> -	Circular -	Overall: 800 diam x 745 H
<b>FDT 10 C</b> -	Circular -	Overall: 1000 diam x 745 H
<b>FDT 12 C</b> -	Circular -	Overall: 1200 diam x 745 H
<b>FDT 1608 R</b> -	Rectangular -	Overall: 1600 W x 800 D x 745 H

### Specification:

**Table:** MFC, Laminate or veneered tops

**Frame:** Stainless Steel, or Black painted

### Range description:

Farringdon tables are available with an MFC, laminate, or veneer tabletops and with a variety of popular top shapes. Featuring a robust, flat, stainless steel, or Black painted circular disc base these tables make ideal companions to our leisure, soft seating and break-out seating collections

### Standard product information:

standard top, tubular steel frame, Stainless-steel or Black finish



Images

CAD



# Farringdon Poseur Tables

## NAME OF PRODUCT

Farringdon Poseur Tables

### Dimensions:

**FPT 06 C** - Circular - Overall: 600 diam x 1125 H  
**FPT 08 C** - Circular - Overall: 800 diam x 1125 H

### Specification:

**Table:** MFC, Laminate or veneered tops

**Frame:** Stainless Steel, or Black painted

### Range description:

Farringdon tables are available with an MFC, laminate, or veneer tabletops and with a variety of popular top shapes. Featuring a robust, flat, stainless steel, or Black painted circular disc base these tables make ideal companions to our leisure, soft seating and break-out seating collections

### Standard product information:

standard top, tubular steel frame, Stainless-steel or Black finish



Images

CAD



Plus\_



# Plus Coffee Tables

## NAME OF PRODUCT

Plus Coffee Tables

### Dimensions:

PLU 1 -	Square -	Overall: 600 W x 600 D x 350 H
PLU 2 -	Rectangular -	Overall: 1200 W x 600 D x 350 H
PLU 3 -	Circular -	Overall: 800 diam x 350 H
PLU 4 -	Soft Square -	Overall: 640 W x 640 D x 350 H
PLU 5 -	Elliptical -	Overall: 1600 W x 700 D x 350 H

### Specification:

**Table:** MFC, Laminate or veneered tops

**Frame:** Chrome, Black or White painted solid steel wire frame

### Range description:

Plus coffee tables represent simplicity and adaptability in a modern world. The slim, solid wire chrome frame is complimented by a variety of top shapes and sizes to suit most soft seating, reception or informal meeting environments, which are all available in our standard veneer, laminate or MFC finishes.

The elegant frame makes Plus a great addition to our extensive range of multi-purpose and soft seating ranges featuring a complimenting solid wire chrome, Black or white frame.

Plus coffee tables work superbly with all our soft seating collection.

### Standard product information:

standard top, tubular steel frame, Stainless-steel or Black finish







Klara Coffee  
Tables\_



# Klara Coffee Tables

## NAME OF PRODUCT

Klara Coffee Tables

### Dimensions:

#### Coffee Tables

KCT 1 -	Circular -	Overall: 500 diam x 415 H
KCT 2 -	Circular -	Overall: 800 diam x 415 H
KCT 3 -	Square -	Overall: 600 W x 600 D x 415 H
KCT 4 -	Rectangular -	Overall: 1600 W x 600 D x 415 H
KCT 5 -	Soft Square -	Overall: 640 W x 640 D x 415 H
KCT 6 -	Elliptical -	Overall: 1600 W x 700 D x 415 H
KCT 7 -	Plectrum -	Overall 1100 W x 700 D x 415 H
KCT 8 -	Small Plectrum -	Overall: 700 x W x 450 D x 415 H

#### Lounge Tables

KLT 1 -	Circular -	Overall 500 diam x 615 H
KLT 2 -	Small Plectrum -	Overall: 700 W x 450 D x 615 H

### Specification:

**Table:** MFC, Laminate, Veneered, or CDF (Compact Density Fibreboard) tops

**Frame:** Black painted tubular steel

### Range description:

Minimalist in appearance and a simple style, Klara coffee tables can provide an ideal location for one to one or small group interactions

### Standard product information:

standard top, tubular steel frame, Black finish





Tapas\_



## NAME OF PRODUCT:

Tapas – Low seating and Dining tables

---

### Specification:

#### Seating:

TAP CSM 1 - standard height, four-legged, stacking, steel mesh chair

#### Dimensions:

TAP CSM 1 - 535W x 560D x 805H

#### Tables:

TAP DT 06 C - 590 diam x 730mm 4-leg dining

TAP DT 08 C - 790 diam x 730mm 4-leg dining

#### Range description:

The Tapas concept has been developed specifically for café areas, restaurants and leisure settings. It represents the ideal marriage of design and versatility, adapting perfectly to any context. A line dedicated to both indoor and outdoor environments teamed with a range of outdoor specific seats developed to adapt perfectly to outdoor environments.

---

#### Standard product information:

TAP CSM 1 - 4-legged chair: Steel frame with a steel mesh seat and back, painted black finish

TAP DT 06 / 08 C - Low table: Steel frame painted black with gloss black feet. Top 12mm thick black core laminate

---



Images

CAD



## NAME OF PRODUCT:

Tapas - High Seating and Poseur tables

### Specification:

#### Seating:

**TAP HCSCM 1** - poseur height, four-legged, stacking, steel mesh chair

**TAP HSP 1** - poseur height, four-legged, black plastic shell stool

#### Dimensions:

**TAP HCSCM 1** - 560w x 560d x 1100h

**TAP HSP 1** - 422w x 458d x 1026h

#### Tables:

**TAP HT 06 C** - 590 diam x 1095mm

#### Range description:

The Tapas concept has been developed specifically for café areas, restaurants and leisure settings. It represents the ideal marriage of design and versatility, adapting perfectly to any context. A line dedicated to both indoor and outdoor environments teamed with a range of outdoor specific seats developed to adapt perfectly to outdoor environments.

#### Standard product information:

**TAP HCSCM 1** - 4-legged highchair: Steel frame with a steel mesh seat and back, painted black finish

**TAP HSP 1** - 4-legged high stool: Steel frame with a black plastic seat and low back

**TAP HT 06 C** - High table: Steel frame painted black with gloss black feet. Top 12mm thick black core laminate



Images

CAD



Bee Solo\_



# Bee Solo

**PRODUCT CODE:**  
**BSB1/PLY2V/SC20**

**NAME OF PRODUCT:**  
Bee Solo

**Dimensions:**

**BSB1/PLY2V/SC20** - Overall -1395 x 1095 x 1360mm

**Range description:**

Creating another new workspace for the agile working environment, Bee upholstered solo booths provide another opportunity for greater differentiation in 'smart' workplaces.

Bee solo booths can provide you with the opportunity to create more interesting, focused working or studying environments within the busy 'open plan' office environment, with an even greater appreciation of aesthetics and acoustics than previously available.

**Standard Specification:**

Solo work booth, with acoustic surround, with a Fenix worktop and an upholstered seating bench

**Screen Upholstery:** Camira Synergy – Kvadrat Remix

**Edge/Top Caps:** Fenix/Ply Core

**Worktop:** Fenix with Ply Core or MFC

**Power:** Desk Mounted vertical Power Unit, Plywood construction with a laminate front with 1 x power and twin USB, with a 2m starter cable to UK plug.

**Options:**

Standard two-tone upholstery - **TT** - no charge

Standard three-tone upholstery - **3T** + 5%

Polished plywood Worktop, faced with black or white Nanotech laminate, with a top chamfered edge detail - **PLY** –

Wire management "Zippy" - **BEE ZIP** -

Desk-top power module - **CAP 2** - (2 x UK power + twin USB A+C + starter cable)

Plywood power module - **PLY 2 V** - (2 x UK power + starter cable)

Plywood power module - **PLY 3 H** - (2 x UK power + twin USB A + C + starter cable)



Images

CAD



# Bee Solo\_

**PRODUCT CODE:**  
**BSB 2/PLY2 V/SC 20**

**NAME OF PRODUCT:**  
Bee Solo

**Dimensions:**  
**BSB 2/PLY 2V/SC 20** - Overall 1495 x 1095 x 1360mm

**Range description:**

Creating another new workspace for the agile working environment, Bee upholstered solo booths provide another opportunity for greater differentiation in 'smart' workplaces.

Bee solo booths can provide you with the opportunity to create more interesting, focused working or studying environments within the busy 'open plan' office environment, with an even greater appreciation of aesthetics and acoustics than previously available.

**Standard Specification:**

Solo work booth, with acoustic surround, with a Fenix worktop

**Screen Upholstery:** Camira, Synergy, Kvadrat Remix

**Edge/Top Caps:** Fenix/Ply Core

**Worktop:** Fenix with Ply Core or MFC

**Power:** Desk Mounted vertical Power Unit, Plywood construction with a laminate front with 1 x power and twin USB, with a 2m starter cable to UK plug.

**Options:**

Standard two-tone upholstery - **TT** - no charge

Standard three-tone upholstery - **3T** + 5%

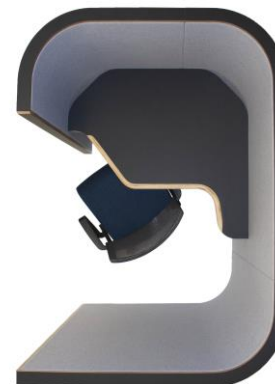
Polished plywood Worktop, faced with black or white Nanotech laminate, with a top chamfered edge detail - **PLY** -

Wire management "Zippy" - **BEE ZIP** -

Desk-top power module - **CAP 2** - (2 x UK power + twin USB A+C + starter cable)

Plywood power module - **PLY 2 V** - (2 x UK power + starter cable)

Plywood power module - **PLY 3 H** - 2 x UK power + twin USB A + C + starter cable)



Images

CAD





# Bee Solo\_

**PRODUCT CODE:**  
**BSB3 / PLY 2V / SC20**

**NAME OF PRODUCT:**  
Bee Solo

**Dimensions:**

**BSB 3 / PLY 2V / SC2** - Overall - 1195 x 1014 x 1360mm

**Range description:**

Creating another new workspace for the agile working environment, Bee upholstered solo booths provide another opportunity for greater differentiation in 'smart' workplaces.

Bee solo booths can provide you with the opportunity to create more interesting, focused working or studying environments within the busy 'open plan' office environment, with an even greater appreciation of aesthetics and acoustics than previously available.

**Specification:**

solo work booth, with acoustic surround, with a Fenix worktop

Screen Upholstery: Camira, Synergy, Partner

Edge Caps: Fenix/Ply Core

Tabletop: Fenix with Ply Core or MFC

Desk Mounted vertical Power Unit, Plywood construction with a laminate front with 1 power and twin USB, with a 2m starter cable to UK plug.

**Options:**

Standard two-tone upholstery - **TT** - no charge

Standard three-tone upholstery - **3T** + 5%

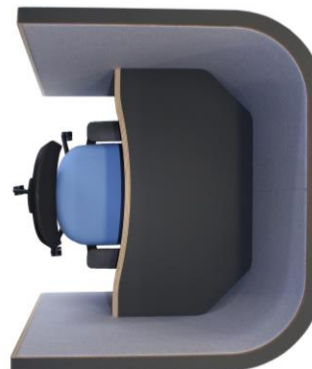
Polished plywood Worktop, faced with black or white Nanotech laminate, with a top chamfered edge detail - **PLY** -

Wire management "Zippy" - **BEE ZIP** -

Desk-top power module - **CAP 2** - (2 x UK power + twin USB A+C + starter cable)

Plywood power module - **PLY 2 V** - (2 x UK power + starter cable)

Plywood power module - **PLY 3 H** - (2 x UK power + twin USB A + C + starter cable)





Plaza Solo  
booth\_



# Plaza solo work booth

**PRODUCT CODE:**

PLZ60 / 61 / 62

**NAME OF PRODUCT:**

Plaza solo work booth

**Dimensions:**

PLZ60 - Overall - 1000 W x 765 D x 1360 H

PLZ 61 - Overall - 965 W x 765 D x 1360 H

PLZ 62 - Overall - 965 W x 765 D x 1360 H

Seat height - 440 H

Seat width - 930 W

Seat depth - 475 D

**Specification:**

Seat Fabric: Remix, or equivalent

Backrest Fabric: Remix, or equivalent

Surround Fabric: Remix, or equivalent.

A CPCM OE pixel unit may be fitted in the open side of the seat

**Range description:**

Today work can take place anywhere, with wireless technology supporting more varied, interesting, inspirational and comfortable workspaces. With a simplicity of form and restrained appearance the Plaza Solo work booth provides a simple solution for informal meeting, waiting or workspaces.

With a generosity of dimension Plaza provides a superb statement and focal point in any space, while the soft upholstery envelopes and reassures the user, providing a welcome oasis of comfort.

**Standard product information:**

Seat cushion: Combustion modified high resilient (CMHR) foam. Tailored upholstery

Back cushion: Combustion modified high resilient (CMHR) foam. Tailored upholstery

Acoustic surround: Shaped and formed wood frame, upholstered over CMHR foam

**Options**

Standard two-tone upholstery -

**TT**

no charge

Standard three tone upholstery

**3T**

+ 5%

Power module in seat

**PLZ CPCM**



# Plaza solo work booth

**PRODUCT CODE:**

PLZ60 / 61 / 62

**NAME OF PRODUCT:**

Plaza solo work booth

**Dimensions:**

PLZ60 - Overall - 1000 W x 765 D x 1360 H

PLZ 61 - Overall - 965 W x 765 D x 1360 H

PLZ 62 - Overall - 965 W x 765 D x 1360 H

Seat height - 440 H

Seat width - 930 W

Seat depth - 475 D

**Specification:**

Seat Fabric: Remix, or equivalent

Backrest Fabric: Remix, or equivalent

Surround Fabric: Remix, or equivalent.

A CPCM OE pixel unit may be fitted in the open side of the seat

**Range description:**

Today work can take place anywhere, with wireless technology supporting more varied, interesting, inspirational and comfortable workspaces. With a simplicity of form and restrained appearance the Plaza Solo work booth provides a simple solution for informal meeting, waiting or workspaces.

With a generosity of dimension Plaza provides a superb statement and focal point in any space, while the soft upholstery envelopes and reassures the user, providing a welcome oasis of comfort.

**Standard product information:**

Seat cushion: Combustion modified high resilient (CMHR) foam. Tailored upholstery

Back cushion: Combustion modified high resilient (CMHR) foam. Tailored upholstery

Acoustic surround: Shaped and formed wood frame, upholstered over CMHR foam

**Options**

Standard two-tone upholstery -

**TT**

no charge

Standard three tone upholstery

**3T**

+ 5%

Power module in seat

**PLZ CPCM**



Brix Solo  
work booth\_



# Brix Solo work booth

**PRODUCT CODE:**

BRX 61 BSWL + CPCM +  
SC20

**NAME OF PRODUCT:**

Brix Solo work booth

**Dimensions:**

**BRX 61 BL** - Overall - : 1000 W x 725 D x 1365 H

Seat height – 455 H

Seat width – 930 W

Seat depth – 725 D

**Specification:**

Acoustic shell Fabric – Kvadrat Remix, or equivalent

Seat Fabric – Kvadrat Remix, or equivalent

Seat Back fabric – Kvadrat Remix, or equivalent

LH Writing tablet with a Fenix laminate finish with a CPCM power module and starter cable with 1 Socket + 1 TUF (1 USB A + 1 USB C)

Black metal feet

**Range description:**

The office is a changing shape and function as more people return to the workplace. The requirement for furniture is no longer simply to provide a space to work, but to provide a safe, private, flexible workspace away from the workstation.

A place where you can relax, recoup after a lengthy meeting, or to maintain focus in a comfortable 'agile' environment, where power is close at hand, and you can remain in touch with the workplace when required, but acoustically and physically separated from the hustle and bustle of the office.

**Standard product information:**

**Seat cushion:** Combustion modified high resilient (CMHR) foam. Tailored upholstery

**Back cushion:** Combustion modified high resilient (CMHR) foam. Tailored upholstery

**Acoustic surround:** Formed plywood with combustion modified high resilient (CMHR) foam. Tailored upholstery

**Legs:** Powder coated tubular steel, painted chrome, or black finish with height levelling feet

**Options:**

Writing Tablet – MFC

Black wooden feet - BSWL



Images

CAD



# Brix Solo work booth

**PRODUCT CODE:**

BRX 61 BSWL + CPCM +  
SC20

**NAME OF PRODUCT:**

Brix Solo work booth

**Dimensions:**

**BRX 61 BL** - Overall - : 1000 W x 725 D x 1365 H

Seat height – 455 H

Seat width – 930 W

Seat depth – 725 D

**Specification:**

Acoustic shell Fabric – Kvadrat Remix, or equivalent

Seat Fabric – Kvadrat Remix, or equivalent

Seat Back fabric – Kvadrat Remix, or equivalent

LH Writing tablet with a Fenix laminate finish with a CPCM power module and starter cable with 1 Socket + 1 TUF (1 USB A + 1 USB C)

Black metal feet

**Range description:**

The office is a changing shape and function as more people return to the workplace. The requirement for furniture is no longer simply to provide a space to work, but to provide a safe, private, flexible workspace away from the workstation.

A place where you can relax, recoup after a lengthy meeting, or to maintain focus in a comfortable 'agile' environment, where power is close at hand, and you can remain in touch with the workplace when required, but acoustically and physically separated from the hustle and bustle of the office.

**Standard product information:**

**Seat cushion:** Combustion modified high resilient (CMHR) foam. Tailored upholstery

**Back cushion:** Combustion modified high resilient (CMHR) foam. Tailored upholstery

**Acoustic surround:** Formed plywood with combustion modified high resilient (CMHR) foam. Tailored upholstery

**Legs:** Powder coated tubular steel, painted chrome, or black finish with height levelling feet

**Options:**

Writing Tablet –

**MFC**

Black wooden feet -

**BSWL**



Images

CAD



# Brix Solo work booth

**PRODUCT CODE:**

BRX 60 BL

**NAME OF PRODUCT:**

Brix Solo

**Dimensions:**

BRX 60 - Overall - : 1000 W x 725 D x 1365 H

Seat height – 455 H

Seat width – 930 W

Seat depth – 725 D

**Specification:**

Pod fabric: Kvadrat Remix, or equivalent

Seat Fabric: Kvadrat Remix, or equivalent

Seat Back fabric – Kvadrat Remix, or equivalent

Black metal feet

**Range description:**

The office is a changing shape and function as more people return to the workplace. The requirement for furniture is no longer simply to provide a space to work, but to provide a safe, private, flexible workspace away from the workstation.

A place where you can relax, recoup after a lengthy meeting, or to maintain focus in a comfortable 'agile' environment, where power is close at hand, and you can remain in touch with the workplace when required, but acoustically and physically separated from the hustle and bustle of the office.

**Standard product information:****Seat cushion:** Combustion modified high resilient (CMHR) foam. Tailored upholstery**Back cushion:** Combustion modified high resilient (CMHR) foam. Tailored upholstery**Acoustic surround:** Formed plywood with combustion modified high resilient (CMHR) foam. Tailored upholstery**Legs:** Powder coated tubular steel, painted chrome, or black finish with height levelling feet**Options:**

Black wooden feet -

BSWL



Images

CAD





# Brix Solo work booth

**PRODUCT CODE:**

BRX 60 D BL

**NAME OF PRODUCT:**

Brix Solo - Work

**Dimensions:**

BRX 60 - Overall - : 1000 W x 725 D x 1365 H

Seat height – 455 H

Seat width – 930 W

Seat depth – 725 D

**Specification:**

Pod fabric: Kvadrat Remix, or equivalent

Seat Fabric: Kvadrat Remix, or equivalent

Seat Back fabric – Kvadrat Remix, or equivalent

Black metal feet

**Range description:**

The office is a changing shape and function as more people return to the workplace. The requirement for furniture is no longer simply to provide a space to work, but to provide a safe, private, flexible workspace away from the workstation.

A place where you can relax, recoup after a lengthy meeting, or to maintain focus in a comfortable 'agile' environment, where power is close at hand, and you can remain in touch with the workplace when required, but acoustically and physically separated from the hustle and bustle of the office.

**Standard product information:****Seat cushion:** Combustion modified high resilient (CMHR) foam. Tailored upholstery**Back cushion:** Combustion modified high resilient (CMHR) foam. Tailored upholstery**Acoustic surround:** Formed plywood with combustion modified high resilient (CMHR) foam. Tailored upholstery**Legs:** Powder coated tubular steel, painted chrome, or black finish with height levelling feet**Options:**

Black wooden feet -

BSWL

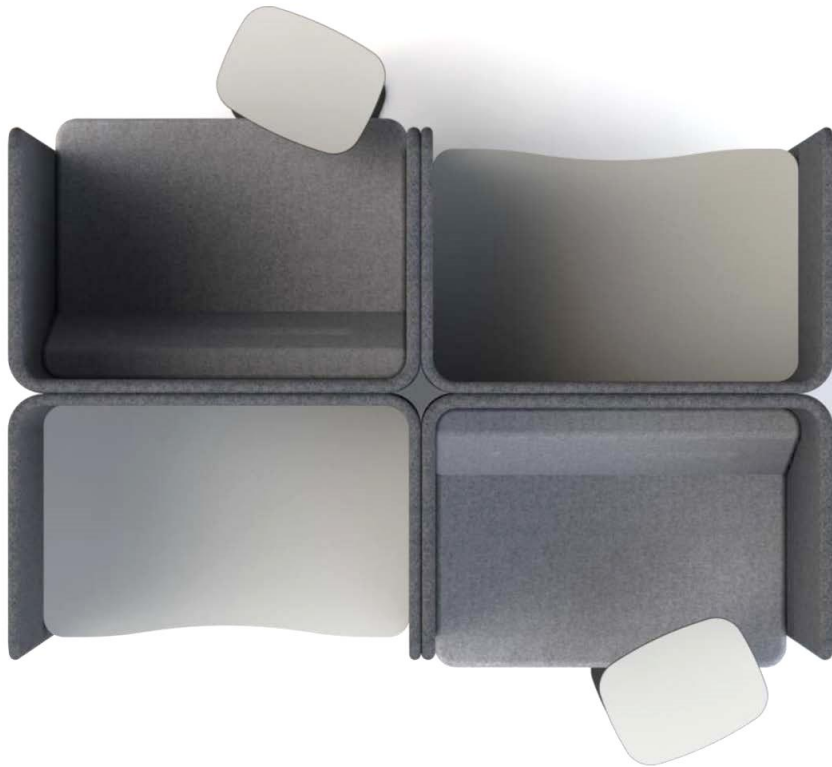
[Images](#)[CAD](#)



**NAME OF PRODUCT:**

Brix Solo -

Brix Solo booths can be grouped together in twos or Fours to provide multiUsers work or relaxing spaces.. Easily reconfigured whenever required these unit provide a versatile, flexible solution to agile working



# Brix Solo work booth





Brix-Up  
Booths\_



# Brix-Up booth

**PRODUCT CODE:**

**BRX 2 B**  
**BRX 4 B**  
**BRX 6 B**

**NAME OF PRODUCT:**

Brix-Up booth

**Dimensions:**

Seat height – 455 H  
Seat depth – 725 D

**BRX 2 B** - Overall - : 2200 W x 750 D x 1365 H

**BRX 4 B** - Overall - : 2200 W x 750 D x 1365 H

**BRX 6 B** - Overall - : 2200 W x 750 D x 1365 H

**Specification:**

Acoustic shell Fabric – Kvadrat Remix, or equivalent  
Seat Fabric – Kvadrat Remix, or equivalent  
Seat Back fabric – Kvadrat Remix, or equivalent  
Black metal feet

**Range description:**

The office is a changing shape and function as more people return to the workplace. The requirement for furniture is no longer simply to provide a space to work, but to provide a safe, private, flexible workspace away from the workstation.

A place where you can relax, recoup after a lengthy meeting, or to maintain focus in a comfortable 'agile' environment, where power is close at hand, and you can remain in touch with the workplace when required, but acoustically and physically separated from the hustle and bustle of the office.

**Standard product information:**

**Seat cushion:** Combustion modified high resilient (CMHR) foam. Tailored upholstery

**Back cushion:** Combustion modified high resilient (CMHR) foam. Tailored upholstery

**Acoustic surround:** Formed plywood with combustion modified high resilient (CMHR) foam. Tailored upholstery

**Table:** MFC vase shaped table, with scallop and supporting shelf

**Legs:** Powder coated tubular steel, painted chrome, or black finish with height levelling feet

**Options:**

Table – MFC  
Black wooden feet - BSWL (shown in the image right)  
Cushions - LSC

[Images](#)[CAD](#)



Evette  
Low Back\_



# Evette Low Back

**PRODUCT CODE:**  
EVETTE

**NAME OF PRODUCT:**  
EVETTE LOW BACK

**Dimensions:**

**EVE 1 LB** - Overall - : 615 W x 710 D x 900 H

**EVE 2 LB** - Overall - 1230 W x 710 D x 900 H

**EVE 3 LB** - Overall - 1850 W x 710 D x 900 H

**EVE C LB** - Overall - 790 W x 790 D x 900 H

Seat height - 470 H

Seat depth - 480 D

**Specification:**

As Doncaster, all Banquette style seating is custom made to order and priced per project.

**Range description:**

Comfortable seating benches, combined with corner units and a ranges of matching tables means that Evette low seating can create more interesting meeting focused working or study environments, within the busy workplace.

**Standard product information:**



Images

CAD



Banquette\_



# Banquette\_

**PRODUCT OF PRODUCT:**  
PLAZA BANQUETTE

---

**Dimensions:**

---

**Specification:**

As Doncaster, all Banquette style seating is custom made to order and priced per project.

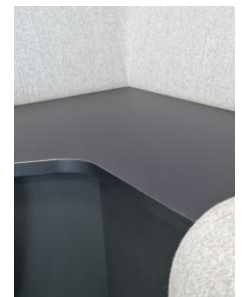
**Range description:**

Comfortable seating benches, combined with corner units and a ranges of matching tables means that Evette low seating can create more interesting meeting focused working or study environments, within the busy workplace.

---

**Standard product information:**

---







Carriage\_



# Carriage\_

**PRODUCT CODE:**  
CGE 2 + FLT 06 S

**NAME OF PRODUCT:**  
Carriage

**Dimensions:**  
CGE 2 + FLT 06 S - Overall - : 2320 W x 880 D x 2300 H

**Specification:**

**Fabric:** Remix, or equivalent Single Colour (for two tone add £295.00 net), including a free-standing table (600 x 600 x 575mm) with an MFC top and black or stainless-steel base

**Range description:**

Creating another new inspiring new meeting space for the agile working environment, Carriage upholstered booths provide the ideal place to meet, eat or simply chill... With a welcome visual transparency, while providing a cosy meeting space, Carriage provides the best of two worlds: separate from the environment, but still within it. Comfortable seating benches along with easy access to power modules that we all need in today's modern workplace, Carriage can be used to create more interesting, meeting, focused working or studying environments within the busy 'open plan' office.

**Standard product information:**

**Upholstery:** The unit will be upholstered in a single fabric, unless specified

**Buttons:** The buttons will always match the seat fabric, unless specified

**Seat:** Combustion modified high resilient (CMHR) foam, tailored upholstery

**Back cushion:** Combustion modified high resilient (CMHR) foam, tailored upholstery

**Back panel and sides:** Combustion modified high resilient (CMHR) foam, tailored upholstery

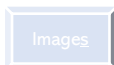
**MFC table finish:** Standard MFC finishes, with a black or stainless-steel pedestal base

**Laminate finishes:** Standard Verco finishes, with a black or stainless-steel pedestal base

**Light:** Suspended, linear LED light, lacquered silver, black or white

**Options:**

**Power:** 4 x USB charging units with 2 x USB fitted to the faces of the four columns





# Carriage\_

**PRODUCT CODE:**  
CGE 4 + FLT 1206 S

**NAME OF PRODUCT:**  
Carriage

**Dimensions:**

CGE 4 + FLT 1206 S - Overall - : 2320 W x 1500 D x 2300 H

**Specification:**

**Fabric:** Remix, or equivalent Single Colour (for two tone add £331.00 net), including a free-standing table (1200 x 600 x 575mm) with an MFC top and black or stainless-steel base

**Range description:**

Creating another new inspiring new meeting space for the agile working environment, Carriage upholstered booths provide the ideal place to meet, eat or simply chill... With a welcome visual transparency, while providing a cosy meeting space, Carriage provides the best of two worlds: separate from the environment, but still within it. Comfortable seating benches along with easy access to power modules that we all need in today's modern workplace, Carriage can be used to create more interesting, meeting, focused working or studying environments within the busy 'open plan' office.

**Standard product information:**

**Upholstery:** The unit will be upholstered in a single fabric, unless specified

**Buttons:** The buttons will always match the seat fabric, unless specified

**Seat:** Combustion modified high resilient (CMHR) foam, tailored upholstery

**Back cushion:** Combustion modified high resilient (CMHR) foam, tailored upholstery

**Back panel and sides:** Combustion modified high resilient (CMHR) foam, tailored upholstery

**MFC table finish:** Standard MFC finishes, with a black or stainless-steel pedestal base

**Laminate finishes:** Standard Verco finishes, with a black or stainless-steel pedestal base

**Light:** Suspended, linear LED light, lacquered silver, black or white

**Options:**

**Power:** 4 x USB charging units with 2 x USB fitted to the faces of the four columns





**PRODUCT CODE:**  
CGE 6 + FLT 1606 S

**NAME OF PRODUCT:**  
Carriage

**Dimensions:**

CGE 6 + FLT 1606 S - Overall - : 2320 W x 2110 D x 2300 H

**Specification:**

**Fabric:** Remix, or equivalent Single Colour (for two tone add £368.00 net), including a free-standing table (1600 x 600 x 575mm) with an MFC top and black or stainless-steel base

**Range description:**

Creating another new inspiring new meeting space for the agile working environment, Carriage upholstered booths provide the ideal place to meet, eat or simply chill... With a welcome visual transparency, while providing a cosy meeting space, Carriage provides the best of two worlds: separate from the environment, but still within it. Comfortable seating benches along with easy access to power modules that we all need in today's modern workplace, Carriage can be used to create more interesting, meeting, focused working or studying environments within the busy 'open plan' office.

**Standard product information:**

**Upholstery:** The unit will be upholstered in a single fabric, unless specified

**Buttons:** The buttons will always match the seat fabric, unless specified

**Seat:** Combustion modified high resilient (CMHR) foam, tailored upholstery

**Back cushion:** Combustion modified high resilient (CMHR) foam, tailored upholstery

**Back panel and sides:** Combustion modified high resilient (CMHR) foam, tailored upholstery

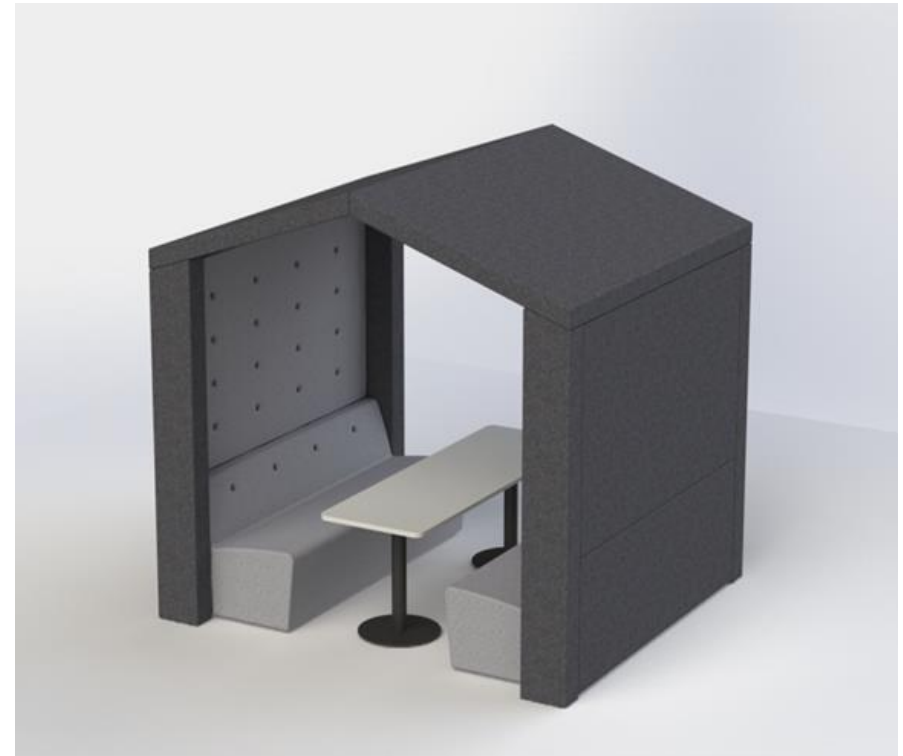
**MFC table finish:** Standard MFC finishes, with a black or stainless-steel pedestal base

**Laminate finishes:** Standard Verco finishes, with a black or stainless-steel pedestal base

**Light:** Suspended, linear LED light, lacquered silver, black or white

**Options:**

**Power:** 4 x USB charging units with 2 x USB fitted to the faces of the four columns





Bethan  
high stools\_



# Bethan high stool

**PRODUCT CODE:**  
BET 11

**NAME OF PRODUCT:**  
Bethan high stool

---

**Dimensions:**

**BET 11** - Overall - 390 W x 490 D x 890 H  
Seat height - 750 h

---

**Specification:**

Seat Fabric: Remix, or equivalent

Base: Solid wire frame, Powder Coated Black finish

**Range description:**

Bethan features a modern and sleek design, with the choice of slender solid wire sled frame or contemporary solid oak legs.

The ergonomically shaped moulded re-curve ply shell with combustion modified high resilient (CHMR) foam features tailored upholstery, providing superior comfort without detracting from the minimal form of the design.

---

**Standard product information:**

Frame: Solid wire frame Chrome or Black finish, or solid wooden Oak legs which can be stained to black.

Seat shell: Moulded, re-curve ply shell with combustion modified high resilient (CHMR) foam. Tailored upholstery

---



Images

CAD





# Bethan high stool

**PRODUCT CODE:**

BET 11 WL

**NAME OF PRODUCT:**

Bethan high stool

**Dimensions:**

BET 11 WL - Overall - 390 W x 490 D x 890 H  
Seat height - 750 h

**Specification:**

Seat Fabric: Remix, or equivalent

Frame: Solid Oak, with chrome foot rail

**Range description:**

Bethan features a modern and sleek design, with the choice of slender solid wire chrome sled frame, or contemporary solid oak legs.

The ergonomically shaped moulded re-curve ply shell with combustion modified high resilient (CHMR) foam features tailored upholstery, providing superior comfort without detracting from the minimal form of the design.

**Standard product information:**

Frame: Solid Oak, with chrome foot rail

Seat shell: Moulded, re-curve ply shell with combustion modified high resilient (CHMR) foam. Tailored upholstery



Images

CAD





Bethan  
chairs\_





**PRODUCT CODE:**  
**BET 1 BL**

**NAME OF PRODUCT:**  
Bethan

**Dimensions:**

**BET 1 BL** - Overall - 390 W x 490 D x 890 H  
Seat height – 450 H

**Specification:**

Upholstery:: Kvadrat Remix 3

Sled frame: Solid wire frame, Powder coated Black

**Range description:**

Bethan features a modern and sleek design, with the choice of slender solid wire chrome sled frame and arms, a graceful four-star base, or contemporary solid oak legs.

The ergonomically shaped moulded, re-curve ply shell with combustion modified high resilient (CHMR) foam features tailored upholstery, providing superior comfort without detracting from the minimal form of the design.

Designed by Studio Verco.

**Standard product information:**

Frame: Solid wire chrome frame

Arms: Solid wire chrome framed loop arms

Seat shell: Moulded, re-curve ply shell with combustion modified high resilient (CHMR) foam. Tailored upholstery



Images

CAD





Anna\_  
worksofa



## NAME OF PRODUCT:

Anna Sofa Units

---

### Specification:

Seating Sofa Units – 1,2 & 3 seater, plus corner sofa unit

### Range description:

The office itself is changing shape and function; we are starting to see a reduction in the requirement for permanent workstations, and being replaced by a new 'softer', more domestic, feel for the workplace, with soft furnishings being used as breakout areas, informal meeting places and occasional workspaces.

---

### Standard product information:

ANA 1 S – Single seat sofa unit

ANA 2 S – Two seat sofa unit

ANA 3 S – Three seat sofa unit

ANA C S – Corner seat sofa unit

---

### Options:

---



Images

CAD



## NAME OF PRODUCT:

### Anna Bench units

---

#### Specification:

**Seating Bench Units** – 1,2 & 3 seater, plus Corner bench unit

#### Range description:

The office itself is changing shape and function; we are starting to see a reduction in the requirement for permanent workstations, and being replaced by a new 'softer', more domestic, feel for the workplace, with soft furnishings being used as breakout areas, informal meeting places and occasional workspaces.

---

#### Standard product information:

ANA 1 B – Single seat bench unit

ANA 2 B – Two seat bench unit

ANA 3 B – Three seat bench unit

ANA C B – Corner seat bench unit

---

#### Options:

---





Anna\_



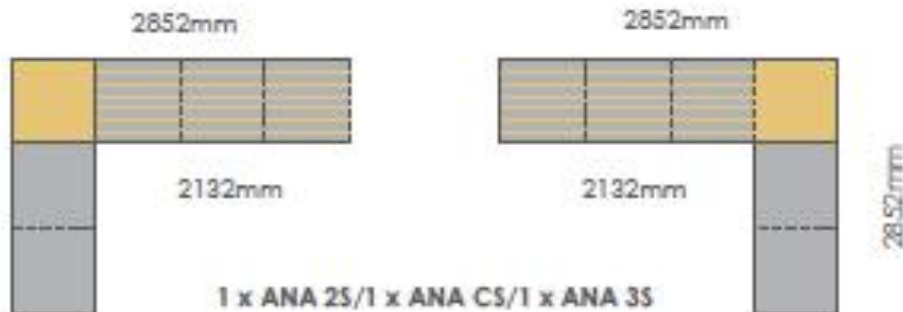
Images

CAD




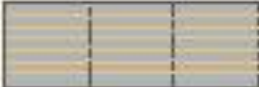


# anna\_configurations

Dimensions shown are for the Anna seating benches.  
Please add an additional 70mm to the **depth** of each sofa unit used.



## Key

	corner unit - ANA C5 or C8
720mm	
	single unit - ANA 15 or 18
720mm	
	two seater unit - ANA 25 or 28
1426mm	
	three seater unit - ANA 35 or 38
2132mm	
<b>N.B.</b> any sofa unit can be replaced by a bench unit if required	

Images

CAD



Danny\_



**PRODUCT CODE:**  
DNY 1 PB

**NAME OF PRODUCT:**  
Danny

**Dimensions:**

**DNY 1 PB** - Overall - : 660 W x 660 D x 470 H  
Seat height - 355 SH

**Specification:**

Upholstery Fabric: Kvadrat, Remix 3, or equivalent  
Base: Black RAL 9005

**Range description:**

Danny is a slender modern design, with a nod to the classic seating designs of the 50's and 60's. Featuring a distinctive four leg base, available with a smooth swivel action, the Danny range is perfect for breakout and meeting environments. Its slimline but flexible construction allows for supreme comfort, allowing users to enjoy a high level of comfort for longer periods.

**Standard product information:**

Frame: Cast aluminium four-star, Black or polished finish

Seat cushion: Cold-cured combustion modified high resilient (CMHR) foam with Tailored upholstery

Shell: Cold-cured, twin density combustion modified high resilient (CMHR) foam. with Tailored upholstery







# Danny\_

**PRODUCT CODE:**

DNY 1

**NAME OF PRODUCT:**

Danny

---

**Dimensions:**

DNY1 - Overall - : 660 W x 660 D x 470 H 355 SH

---

**Specification:**

Alternative Danny chair frames / bases

---

**Standard product information:**

**Standard Frame:** Tubular steel four-star, black or chrome finish

**Pyramid base:** Powder coated black, or polished cast aluminum four-star base

**Sled frame:** Solid wire sled frame powder coated black

**Four leg frame:** Tubular steel four-legged frame powder coated black

---





Snug\_

**PRODUCT CODE:****SNU 1 WL****NAME OF PRODUCT:****Snug****Dimensions:****Overall** – 440w x 660d x 485h**Seat height** – 375mm**Seat depth** – 450mm**Specification:**

medium back tub chair

**Range description:**

With beautiful lines and a wonderfully curved shell, the Snug chair can provide a more cosy, domestic feel to your workspace. Harking back to 70s styling the snug captures simplicity and beauty in one single chair.

With generous upholstery and a choice of frames the snug chair can find a welcome home in any modern office environment, while the Snug Lounge chair brings elegance and sophistication to reception, break-out or waiting areas.

**Standard product information:****Frame:** Wooden Frame**Seat cushion:** Cold-cured combustion modified high resilient (CMHR) foam. Tailored upholstery**Shell:** Cold-cured combustion modified high resilient (CMHR) foam. Tailored upholstery**Options**

Polished four-star pyramid base PP

Black four-star pyramid base PB

Black frame BL

Wooden frame: Solid Oak four-legged frame, clear lacquered -

Stain to sample STS + 10%

Two-tone upholstery TT + 5%





# Snug\_

PRODUCT CODE:

**SNUG Alternative frames**

NAME OF PRODUCT:

Snug

---

**Standard Four-star frame –**

Black or Chrome

**Swivel Four-star frame –**

Black or Chrome

**Pyramid Aluminium base –**

Black or polished

**Wooden four-legged frame –**

Oak or stained to match

**Wooden four-legged lounge frame -**

Oak or stained to match

---



Images

CAD



# Snug

**PRODUCT CODE:****SNU 11 BL****NAME OF PRODUCT:**

Snug high back lounge chair

**Dimensions:****Overall** – 786w x 835d x 1150h**Seat height** – 450mm**Seat depth** – 655mm**Specification:**

High back lounge chair on a four-star swivel base, with a chrome or black finish. Upholstered in a Camira Blazer fabric, or equivalent

With beautiful lines and a wonderfully curved shell, the snug chair can provide a more cosy, domestic feel to your workspace. Harking back to 70s styling the snug captures simplicity and beauty in one single chair. With generous upholstery and a choice of frames the snug chair can find a welcome home in any modern office environment, while the snug Lounge chair brings elegance and sophistication to reception, break-out or waiting areas

**Options:****Sled base****Wooden four-legged base**



Benny & Bjorn\_



# Benny\_

**PRODUCT CODE:**

**BEN1**

**NAME OF PRODUCT:**

**Benny**

**Dimensions:**

Overall – 860W x 730D x 860H

Seat height - 410H

**Specification:**

medium back lounge armchair, with a solid wire sled frame

**Range description:**

Today work can take place anywhere, with wireless technology supporting more varied, interesting, inspirational and comfortable workspaces.

With a simplicity of form and a restrained appearance Bjorn and Benny provide a sophisticated solution for informal meeting, waiting or workplaces. With a generosity of dimension Bjorn provides a superb statement and focal point in any space, while the soft upholstery envelopes and reassures the user, providing a welcome oasis of comfort.

**Standard product information:**

**Seat cushion:** Combustion modified high resilient (CMHR) foam. Tailored upholstery

**Shell:** Combustion modified high resilient (CMHR) foam. Tailored upholstery

**Frame:** Solid wire frame with a black or chrome finish

**Four star swivel base:** Four star steel base with a black or chrome finish

**Options**

Standard two-tone upholstery TT + 5%

Wooden leg frame (Beech) - WL



Images

CAD

**PRODUCT CODE:****BJN 1****NAME OF PRODUCT:****Bjorn****Dimensions:**

Overall – BJN 1 860W x 820D x 1080H

Seat height - 420 H

**Specification:**

high back lounge armchair, with a solid wire, sled frame

**Range description:**

Today work can take place anywhere, with wireless technology supporting more varied, interesting,

inspirational and comfortable workspaces.

With a simplicity of form and a restrained appearance Bjorn and Benny provide a sophisticated solution

for informal meeting, waiting or workplaces. With a generosity of dimension Bjorn provides a superb

statement and focal point in any space, while the soft upholstery envelopes and reassures the user,

providing a welcome oasis of comfort.

**Standard product information:****Seat cushion:** Combustion modified high resilient (CMHR) foam. Tailored upholstery**Shell:** Combustion modified high resilient (CMHR) foam. Tailored upholstery**Head roll:** Combustion modified high resilient (CMHR) foam. Tailored upholstery**Frame:** Solid wire frame with a black or chrome finish**Options:**

Four-star swivel base with a black or chrome finish

Standard two-tone upholstery TT + 5%

Wooden leg frame (Beech) - WL

[Images](#)[CAD](#)





Klara

**PRODUCT CODE:****KLA 1 FU****NAME OF PRODUCT:**

Klara fully upholstered lounge chair

**Dimensions:**

Overall – 786w x 835d x 1150h

Seat height – 450mm

Seat depth – 655mm

**Specification:**

Low back lounge chair on a four-legged, with a black finish. Upholstered in a Camira Blazer fabric, or equivalent

Minimalist in appearance and simple in design, Klara provides an ideal location for one to one or small group interactions.

With a modern aesthetic and light form, but with a variety of upholstery options, Klara provides the opportunity for a high degree of personalisation. The associated suited table collection allows a fabulous opportunity to engage the senses with the use of colour, texture and materials.

**Options:**

No upholstery

Seat upholstery only





**PRODUCT CODE:**  
**KCT**

**NAME OF PRODUCT:**  
Klara Coffee Tables

**Dimensions:**

**Coffee Tables:**

- KCT 1** – Circular - 500diam x 415
- KCT 2** – Circular - 800 diam x 415mm
- KCT 3** – Square - 600 x 600 x 415mm
- KCT 4** – Rectangular -1200 x 600 x 415mm
- KCT 5** – Soft square - 640 x 640 x 415mm
- KCT 6** – Elliptical -1600 x 700 x 415mm
- KCT 7** – Plectrum -1100 x 700 x 415mm
- KCT 8** – Small Plectrum - 700 x 450 x 415mm

**Lounge Tables:**

- KLT 1** – Circular - 500 diam x 615mm
- KLT 2** – Small Plectrum - 700 x 450 x 615mm

**Specification:**

Minimalist in appearance and a simple style. Klara provides an ideal location for one to one or small group interactions.

Manufactured with the option of an MFC, Laminate or CDF finish top, with Black tubular steel leg frame..

**Options:**

**Top finishes:**

- MFC – Standard Verco MFC
- Laminate: Standard Verco Laminate
- CDF – White top finish with a Black edge





Abby\_

**PRODUCT CODE:**

**ABB 1**  
**ABB 2**  
**ABB 3**

**NAME OF PRODUCT:**

**Abby**

---

**Dimensions:**

**ABB 1 - Overall** – 880w x 760d x 685h  
**Seat height** – 400mm  
**Seat depth** – 520mm  
**ABB 2 - Overall** – 1490w x 760d x 685h  
**Seat height** – 400mm  
**Seat depth** – 520mm  
**ABB 3 - Overall** – 2110w x 760d x 685h  
**Seat height** – 400mm  
**Seat depth** – 520mm

---

**Specification:**

Single, double and treble seater settee, with CMRH foam and tailored upholstery on a web-sprung seat base. Loose back cushions, with tailored upholstery and deep buttoning, polished oak tapered feet, and with stitching to match the button colour.

**Range description:**

Simple clean lines with a traditionally designed and constructed range. Abby has a modern feel with a welcoming, cultured and comfortable attitude. Deep cushioning with smooth sophisticated lines, Abby is also perfect in sumptuous leather upholstery and provides a more relaxed place for waiting, meeting, or working. Web-sprung seats, contrast stitching and deep buttoning are examples of the attention to detail evident in this beautiful collection. Designed by Studio Verco

---

**Options:**

**Two tone upholstery**

---





**PRODUCT CODE:**

JEN 1  
JEN 2  
JEN 3

**NAME OF PRODUCT:**

Jensen

---

**Dimensions:**

**JEN 1 - Overall** – 880w x 760d x 685h  
**Seat height** – 400mm  
**Seat depth** – 520mm  
**JEN 2 - Overall** – 1490w x 760d x 685h  
**Seat height** – 400mm  
**Seat depth** – 520mm  
**JEN 3 - Overall** – 2110w x 760d x 685h  
**Seat height** – 400mm  
**Seat depth** – 520mm

---

**Specification:**

Single, double and treble seater settee, with CMRH foam and tailored upholstery. Traditionally manufactured, with tailored upholstery and buttoning, polished aluminium or Black tapered feet.

**Range description:**

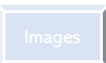
Simple clean lines with a traditionally designed and constructed range Jensen is a lesson in simplicity. High quality materials and craftsmanship are combined with contemporary design and sophisticated lines to produce a range of sofas to define spaces whether used in reception, breakout, meeting or work areas. Designed by Studio Verco

---

**Options:**

**Two tone upholstery**  
**Web-sprung upholstery**  
**Black feet**  
**Wooden leg frame**

---





Box It\_



**PRODUCT CODE:****BOX 40****NAME OF PRODUCT:****Box It****Dimensions:****Overall** – 400W diam x 475H**Seat height** – 475mm**Seat depth** – 400mm**Specification:**

single cylindrical seating stool with leather carrying handle

**Range description:**

Simple yet flexible, fun and funky, angular yet soft, box-it makes it easy to brighten any space and can be reconfigured continuously to meet the demands of the more informal meeting areas. One, two, and three seat units, with sturdy feet or castors to provide perfect grounding, sit comfortably as part of any configuration, ticking all the right boxes.

Designed by Studio Verco.

**Standard product information:****Seat:** Combustion modified high resilient (CMHR) foam. Tailored upholstery**Feet:** Black plastic bun feet**Options:****Different sizes****BOX 60** – Larger stool, with carrying handle

Overall - 600W diam x 475H

**BOX 90** – Larger lounge level stool

Overall - 900W diam x 400H

**Writing Tablet** – Available on BOX 40 and BOX 60[Images](#)[CAD](#)



# Box It\_

**PRODUCT CODE:**

**BOX 60**

**NAME OF PRODUCT:**

**Box It**

**Dimensions:**

**Overall** – 600W diam x 475H

**Seat height** – 475mm

**Seat depth** – 600mm

**Specification:**

single cylindrical seating stool with leather carrying handle

**Range description:**

Simple yet flexible, fun and funky, angular yet soft, box-it makes it easy to brighten any space and can be reconfigured continuously to meet the demands of the more informal meeting areas. One, two, and three seat units, with sturdy feet or castors to provide perfect grounding, sit comfortably as part of any configuration, ticking all the right boxes.

Designed by Studio Verco.

**Standard product information:**

**Seat:** Combustion modified high resilient (CMHR) foam. Tailored upholstery

**Feet:** Black plastic bun feet

**Options:**

**Writing Tablet** – Available on BOX 40 and BOX 60





Images



See\_



See\_

**PRODUCT CODE:**  
**SEE 1**

**NAME OF PRODUCT:**  
**SEE**

---

**Dimensions:**

**Overall** – 500W x 490H

**Seat height** – 490H

**Seat depth** – 500D

---

**Specification:**

single cup shaped upholstered stool

**Range description:**

See offers an exciting take on the traditional occasional seating; a softly upholstered stool provides an informal and friendly seating solution,

The modest proportions belie the dramatic impact that See can have, while the option of the two-tone upholstery can create a peaceful waiting, meeting or thinking area within your workplace.

Designed by Studio Verco.

---

**Standard product information:**

**Seat cushion:** Cold-cured combustion modified high resilient (CMHR) foam.  
Tailored upholstery

---

**Options**

Two tone upholstery TT + 5%

---





See\_

**PRODUCT CODE:**  
**SEE 2**

**NAME OF PRODUCT:**  
**SEE**

---

**Dimensions:**

**Overall** – 500W x 490H

**Seat height** – 490H

**Seat depth** – 390D

---

**Specification:**

single cone shaped upholstered stool

**Range description:**

See offers an exciting take on the traditional occasional seating; a softly upholstered stool provides an informal and friendly seating solution,

The modest proportions belie the dramatic impact that See can have, while the option of the two-tone upholstery can create a peaceful waiting, meeting or thinking area within your workplace.

Designed by Studio Verco.

---

**Standard product information:**

**Seat cushion:** Cold-cured combustion modified high resilient (CMHR) foam.  
Tailored upholstery

---

**Options**

Two tone upholstery TT + 5%

---



Images

CAD



SW19\_



# SW19

**PRODUCT CODE:**  
SW19

**NAME OF PRODUCT:**  
SW19

**Dimensions:**

Overall – 370 w x 500 h

**Specification:**

fully upholstered low, three-legged stool

**Range description:**

Comfy and quirky three-legged upholstered stools, with a passing resemblance to the original 'sport of kings'.

A soft seat cushion with tailored upholstery is combined with elegant tubular steel legs with levelling glides to produce a fun and informal seating solution for the modern workplace

Designed by Studio Verco.

**Standard product information:**

**Seat cushion:** Combustion modified high resilient (CMHR). Tailored upholstery

**Legs:** Powder coated tubular steel, black finish with height levelling glides

**Options**

Two-tone upholstery TT + 5%







Stage\_



## NAME OF PRODUCT:

### Fully upholstered tiered seating units

#### Specification:

Seating Sofa Units – 1,2 & 3 seater, plus corner sofa unit

#### Range description:

Simple clean lines with a traditionally designed and constructed range. Stage has a modern feel with a welcoming, cultured and comfortable attitude.

Deep cushioning with fully upholstered seating units,

Stage provides the ideal environment for a relaxed presentation, meeting or working space. A central storage 'walkway' provides easy access to the rear seats, while the option of quick access USB power modules mean these units are ready for anything

---

#### Standard product information:

**STS 1** – Single seat sofa unit

**STS 2** – Two seat sofa unit

**STS 3** – Three seat sofa unit

**STS COR** – Corner seat sofa unit

---

#### Options:

PLY -

POW -



Images

CAD